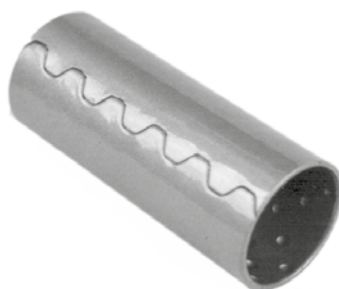


092.298 = BUCHA SILENCIOSA
DIANT. P/ DIANT. 1600



092.299 = BUCHA AÇO DIANT.
P/ TRAS. E TRAS. 1600 / DIANT. E
TRAS. 1800 / ALGEMA DIANT. E
TRAS. 1600 / 1800



092.300 = BUCHA BORRACHA
DIANT. 5000 / 7000 / 7500



092.301 = BUCHA BORRACHA
TRAS. 5000 / 7000 / 7500



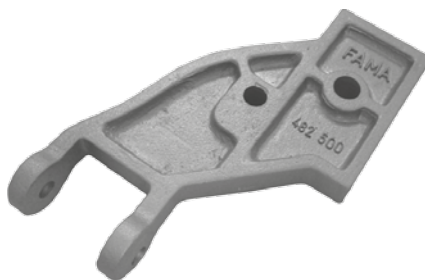
242.300 = ALGEMA DA MOLA
DIANTEIRA 1600 / 1800
Nº. ORIG. (6001.014.004.008)
242.301 = IDEM TRASEIRA
Nº. ORIG. (6001.014.004.009)



242.400 = ALGEMA DA MOLA
TRASEIRA 7000 / 8500
Nº. ORIG. (6007.014.314.008)



242.500 = ALGEMA DA MOLA
TRASEIRA VOLARE
Nº. ORIG. (6008.014.051.004)



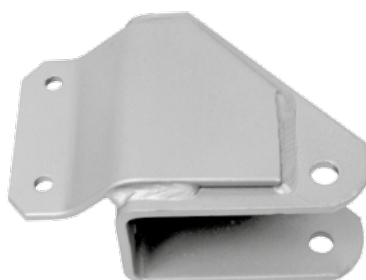
482.500 = GUIA GRAMPO DIANT.
VOLARE A-6 / A-8
Nº. ORIG. (6008.014.12.004)



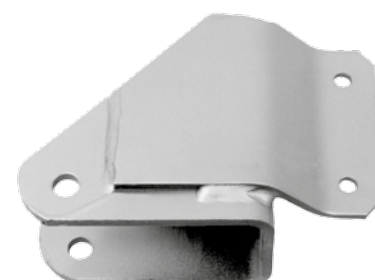
482.501 = GUIA GRAMPO DIANT.
VOLARE
Nº. ORIG. (6007.014.040)



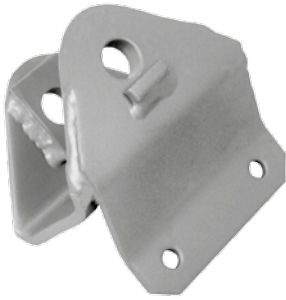
482.502 = GUIA GRAMPO DIANT.
VOLARE
Nº. ORIG. (6007.014.040.991)



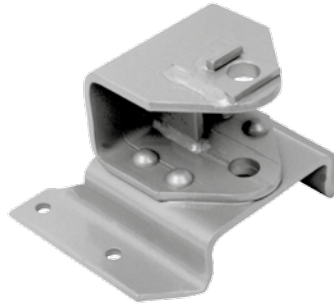
672.300 = SUPORTE DA MOLA
DIANT. P/ DIANT. 1600 / 1800 ESQ.
Nº. ORIG. (6003.002.061.008)



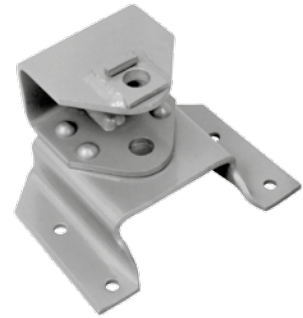
672.301 = SUPORTE DA MOLA
DIANT. P/ DIANT. 1600 / 1800 DIR.
Nº. ORIG. (6003.002.060.000)



672.302 = SUPORTE DA MOLA
DIANT. P/ TRAS. 1600 / 1800
Nº. ORIG. (6006.002.107.002)



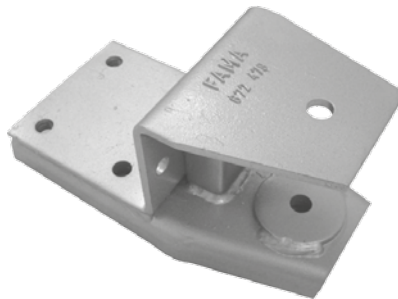
672.303 = SUPORTE DA MOLA
TRAS. P/ DIANT. 1600 / 1800
Nº. ORIG. (6006.002.108.000)



672.304 = SUPORTE DA MOLA
TRAS. P/ TRAS. 1600 / 1800
Nº. ORIG. (6001.002.042.002)



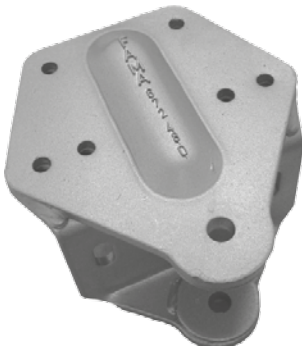
672.400 = SUPORTE DA MOLA
TRASEIRO 7000 / 8500
Nº. ORIG. (6007.002.039.005)



672.478 = SUPORTE DA MOLA
TRAS. P/DIANT. VOLARE A-6 ESQ.
Nº. ORIG. (6008.002.045.000)



672.479 = SUPORTE DA MOLA
TRAS. P/DIANT. VOLARE A-6 DIR.
Nº. ORIG. (6008.002.045.000)



672.480 = SUPORTE DA MOLA
TRAS. P/TRASEIRA VOLARE A-6
Nº. ORIG. (6008.002.558.002)



672.498 = SUPORTE DA MOLA
DIANT. P/ TRASEIRA VOLARE
A-5 / A-6 / A-8
Nº. ORIG. (6008.014.024.001)



672.499 = SUPORTE DA MOLA
TRAS. P/DIANT. VOLARE A-6/A-8



672.500 = SUPORTE DA MOLA
TRAS. P/ TRAS. VOLARE
Nº. ORIG. (6008.014.047.002)



792.300 = PINO DA MOLA DIANT.
P/ DIANT. 1600 (PF. 9/16 AÇO)
792.302 = PINO DA MOLA DIANT.
E TRAS. 7500 (TIPO PF. 16MM AÇO)



792.301 = PINO DA MOLA DIANT.
P/ TRAS. E TRASEIRO 1600 / 1800
Nº. ORIG. (6001.014.021.002)