

**099.300** = BUCHA SILENCIOSA DIANTEIRA D-400 (26 X 12,9)  
Nº. ORIG. (1.920.540)



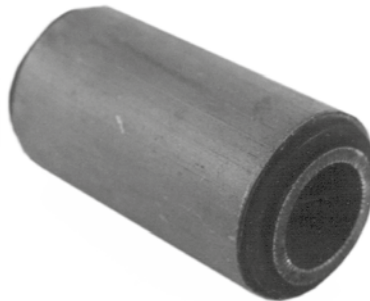
**099.301** = BUCHA DA MOLA TRASEIRA D-400 - BAL  
Nº. ORIG. (1.938.107)



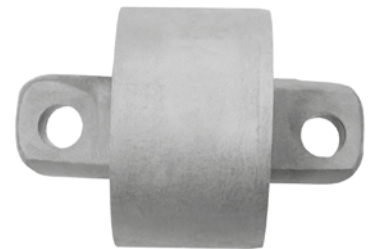
**099.400** = BUCHA SILENCIOSA DIANTEIRA D-700 (35 X 17,5)  
Nº. ORIG. (1.926.764)



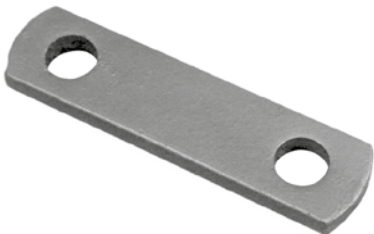
**099.404** = BUCHA DE AÇO TRAS. (TENSOR) D-700 / D-900 / D-950 (3 X 1.1/2 X 1.1/4) - BAL  
Nº. ORIG. (2.238.386)



**099.500** = BUCHA SILENCIOSA DIANTEIRA D-900 (43 X 23,8)  
Nº. ORIG. (2.988.520)



**099.604** = BUCHA DO TIRANTE TRAÇADO  
Nº. ORIG. (QT-04183105)



**149.400** = CHAPA DE JUMELO DIANTEIRA D-700  
Nº. ORIG. (1.926.767)

**149.500** = CHAPA DE JUMELO DIANTEIRA D-900 / D-950  
Nº. ORIG. (2.988.522)



**249.300** = ALGEMA DA MOLA TRASEIRA D-400  
Nº. ORIG. (1.938.085)



**345.045** = CALÇO P/ LEVANTAR MOLEJO TRUCK 77 X 20MM ORIGINAL



**345.046** = CALÇO P/ LEVANTAR MOLEJO TRUCK 77 X 40MM



**390.400** = CASTANHA DA RODA DIANTEIRA D-900 / D-950  
Nº. ORIG. (3.617.615)



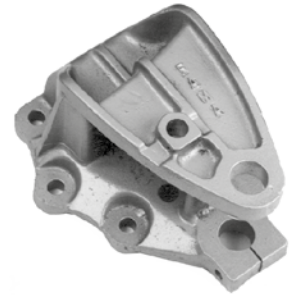
**390.401** = CASTANHA DA RODA TRASEIRA D-900 / D-950  
Nº. ORIG. (3.617.612)



**590.400** = SAPATA DE GRAMPO  
D-700 A D-950  
Nº. ORIG. (T-135.991-74AR)



**679.403** = SUPORTE DA MOLA  
TRAS. P/ DIANT. D-700 / 900 / 950  
ESQUERDO  
Nº. ORIG. (2.989.154)



**679.404** = SUPORTE DA MOLA  
TRAS. P/ DIANT. D-700 / 900 / 950  
DIREITO  
Nº. ORIG. (2.989.155)



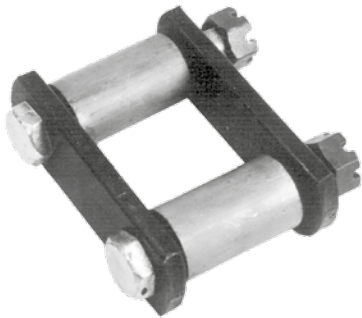
**679.405** = SUPORTE DA MOLA  
TRAS. P/ TRAS. D-700 / 900 / 950  
ESQUERDO  
Nº. ORIG. (2.989.157)



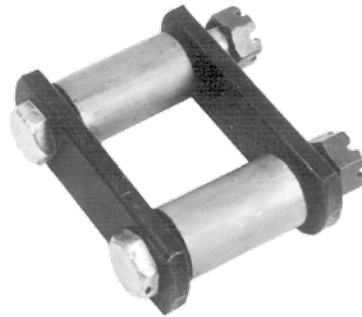
**679.406** = SUPORTE DA MOLA  
TRAS. P/ TRAS. D-700 / 900 / 950  
DIREITO  
Nº. ORIG. (2.989.156)



**679.407** = SUPORTE DA MOLA  
AUXILIAR D-400 / 700 / 900 / 950  
Nº. ORIG. (2.988.209)



**739.400** = JUMELO DA MOLA  
DIANT. D-700 (B. SILENCIOSA)  
Nº. ORIG. (1.926.767-X)



**739.500** = JUMELO DA MOLA  
DIANT. D-900 / D-950 (B. SILENC.)  
Nº. ORIG. (2.988.522-X)



**799.300** = PINO DA MOLA DIANT.  
D-400 P/ BUCHA 1.920.540  
Nº. ORIG. (1.923.876)



**799.301** = PINO DA MOLA TRAS.  
D-400 P/ BUCHA 1.938.107  
Nº. ORIG. (2.231.849)



**799.400** = PINO DA MOLA DIANT.  
D-700 P/ BUCHA 1.926.764  
Nº. ORIG. (2.926.766)



**799.401** = PINO DA MOLA TRAS.  
(TENSOR) D-700 A D-950  
Nº. ORIG. (2.237.732)



**799.402** = PINO DA MOLA TRAS.  
(TENSOR) D-700 A D-950 C/ CAB.  
E ROSCA 1" (SUBST. 2.237.732)  
Nº. ORIG. (FAMA-237)



**799.403** = PINO DA MOLA TRAS.  
(RESSALTO) D-700 A D-950  
Nº. ORIG. (2.237.730)



**799.500** = PINO DA MOLA DIANT.  
D-900 / D-950 P/ BUCHA 2.988.520  
Nº. ORIG. (6.028.456)